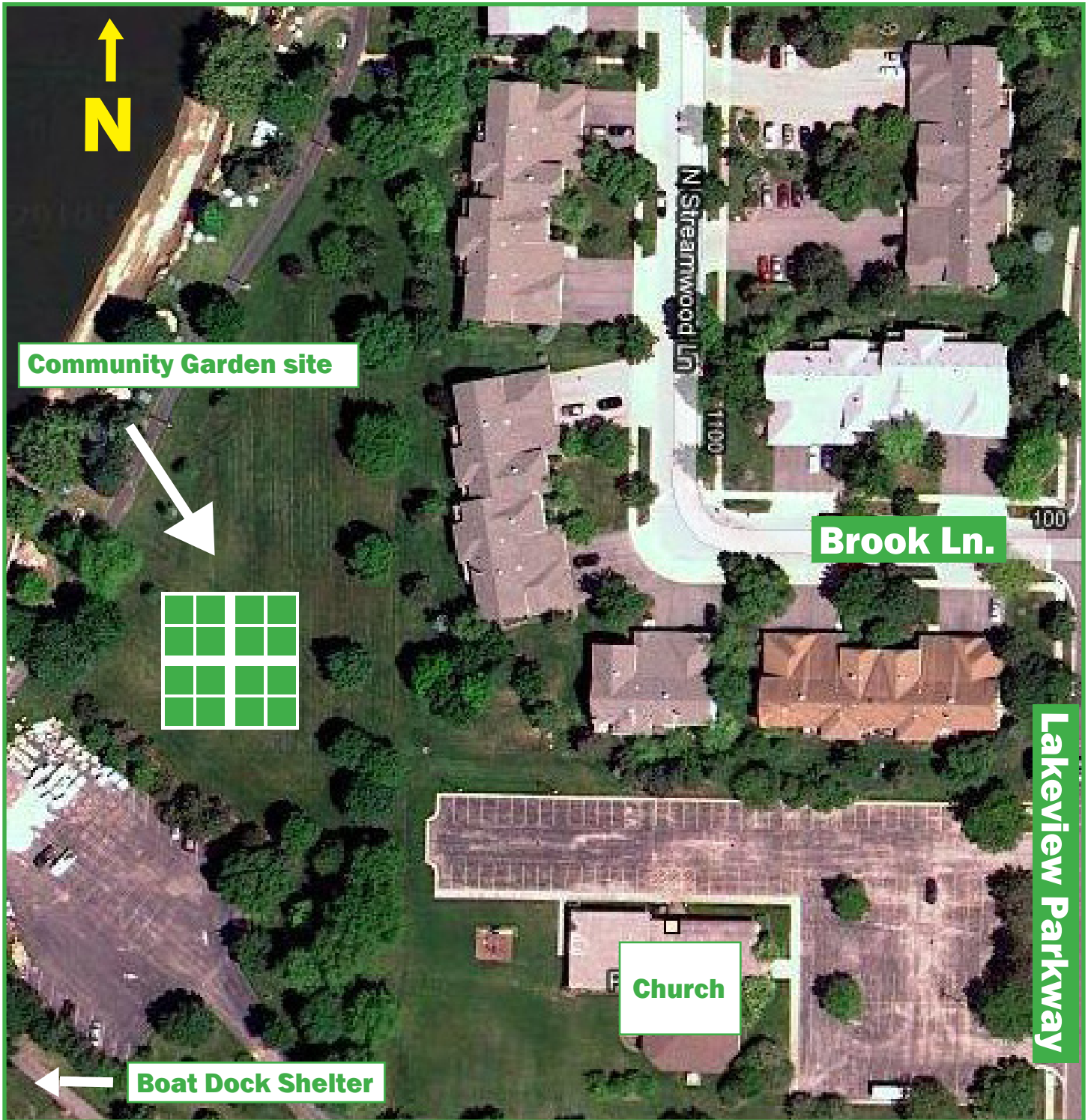




Vernon Hills Park District Community Garden

Located north of Century Park Boat Dock Shelter

Opening Spring 2011



- 15 garden plots will be available at 15ft x 15ft each.
- Resident-only registration 3/1- 3/31. Non-residents can register beginning 4/1.
- Questions? Contact Marty Walsh at 847-996-6935 or martyw@vhparkdistrict.org.