

Youth Variety

Spanish Kids Club

Give your child a fun introduction to a language they might fall in love with! The learning is fast and fun when it's Comfort Zone Learning™! We provide an exciting, out-of-your-chair approach to languages for kids. Crafts, show-and-tell, guessing games, songs, stories, and magic tricks will keep your child excited about learning. Kids will learn words the natural way, in the context of actions and commands. They will learn common actions, clothing, tools, directions, holidays, everyday objects, sports vocabulary, plants, flowers, and more. An optional book is available so you can learn with your child at home!

Ages 3 1/2 - 7 years

Code	Dates	Day	Time	R/NR Fee
31541-1	1/15-2/12	T	5:00-5:45pm	\$62/\$78
31541-2	2/19-3/18	T	5:00-5:45pm	\$62/\$78

Laschen Center, Sugar Creek Room
Language Resources

Checkmate Chess

Develop your child's intellect through the royal game of chess! Current research has shown a strong link between chess and academic performance in a variety of areas, including mathematics and language arts. Chess has also been proven to enhance children's motivation, concentration, focus, social skills, and creativity.

Learn how to win at chess! No previous knowledge of chess is necessary. Each class will consist of a fun interactive teaching period and guided practice time. Both new and returning participants are welcome and will get to the next level under the guidance of an experienced Chess Scholars coach. There will also be a chess competition with prizes!

Ages: 6 - 13 years

Code	Dates	Days	Time	R/NR Fee
31492-1	1/24-2/28	Th	6:30-7:30pm	\$75/\$94
31492-2	3/6-4/17	Th	6:30-7:30pm	\$75/\$94

No class 3/27

Laschen Center, Marimac Room
Chess Scholars



Let's Cook

A pinch of sour and a dash of sweet
Stir them together to make our treat.
Measuring, table setting, and cleaning up will be our new skills.
Who knew that cooking would be such a thrill!
We use both unhealthy and nutritious recipes.
All types of taste buds we aim to please.
Each week we expect a mess,
So with an apron or in play cloths your child should dress.
Recipes vary session to session.
Kids will always learn a new lesson!

Ages: 6 years & up

Code	Dates	Days	Time	R/NR Fee
31451-1	1/9-1/30	W	4:30-6:00pm	\$70/\$88
31451-2	2/13-3/5	W	4:30-6:00pm	\$70/\$88

Sullivan Community Center, Meeting Room A
Chef Helene Cohen



Let's Cook Holidays

We'll spread a little bit of love and a little bit of luck as we prepare some delicious treats in honor of Valentine's Day and St. Patrick's Day. Cupid's arrow will strike your child with a love for cooking. Please dress for a mess or bring an apron to class.

Ages: 6 years & up

Divine Valentine

Code	Date	Day	Time	R/NR Fee
31452-1	2/6	W	4:30-5:30pm	\$18/\$22

St. Patrick's Sweets

Code	Date	Day	Time	R/NR Fee
31452-2	3/12	W	4:30-5:30pm	\$18/\$22

Sullivan Community Center, Meeting Room A
Chef Helene Cohen

Preschool Spanish (Winter '08)

Crafts, show-and-tell, guessing games, and more will happen each class! The learning is fast and fun when it's Comfort Zone Learning™! Each class features words for common actions and everyday objects such as toys, clothing, food, colors, and body parts. Kids will learn in the context of actions and commands which will allow them to recognize more words, making speaking easier. This is a great supplemental class to Little Learner's Preschool, but students need not be in our Preschool program to enroll. However, if they are, staff will escort them to or from their preschool classroom. This class meets 29 times.

Ages: 4 - 5 years

Code	Dates	Days	Time	R/NR Fee
51543-2	1/14-5/12	M,F	11:15am-12:00pm	\$335/\$418

No class on 1/21, 2/18, 3/3, 3/21, 3/24, and 3/28.

These dates are from the Hawthorn calendar, if there are additional days off be they because of bad weather or Little Learner's Preschool fieldtrip we will add days after May 12.

Sullivan Community Center, Meeting Room A

Language Resources

Preschool Spanish (Fall '08)

Crafts, show-and-tell, guessing games, and more will happen each class! The learning is fast and fun when it's Comfort Zone Learning™! Each class features words for common actions and everyday objects such as toys, clothing, food, colors, and body parts. Kids will learn in the context of actions and commands which will allow them to recognize more words, making speaking easier. This is a great supplemental class to Little Learner's Preschool, but students need not be in our Preschool program to enroll. However, if they are, staff will escort them to or from their preschool classroom. This class meets 21 times.

Ages: 4 - 5 years

Code	Dates	Days	Time	R/NR Fee
81543-1	9/15-12/5	M,F	11:15am-12:00pm	\$245/\$306

No class on 10/13, 11/28, and the date of the Little Learner's Preschool Fieldtrip (TBD). If there are additional days off we will add classes after 12/5.

Sullivan Community Center, Meeting Room A

Language Resources



Chinese

Chinese is the most widely spoken language on Earth! Your children will reach adulthood in a world where Chinese industry, culture, and language will be increasingly predominant. Give them a head start in appreciating this critical world language. Our beginning conversational Mandarin course is a fun introduction to the language - and kids love to learn new languages! It's easy for them now, don't wait! Kids learn common actions and commands involving clothing, tools, holidays, sports vocabulary, and more through crafts, show-and-tell, songs, stories, and more. Each session is different so don't limit your child to just one!

Ages 4 - 7 years

Code	Dates	Day	Time	R/NR Fee
31542-1	1/17-2/14	Th	4:15-5:00 pm	\$68/\$85
31542-3	2/21-3/20	Th	4:15-5:00 pm	\$68/\$85

Ages 8 - 12 years

Code	Dates	Day	Time	R/NR Fee
31542-2	1/17-2/14	Th	5:15-6:15 pm	\$68/\$85
31542-4	2/21-3/20	Th	5:15-6:15 pm	\$68/\$85

Laschen Center, Sugar Creek Room

Language Resources

Chess Scholars

Spring Break Camp

Develop your child's intellect through the royal game of chess! Current research has shown a strong link between chess and academic performance in a variety of areas, including mathematics and language arts. Chess has also been proven to enhance children's motivation, concentration, focus, social skills, and creativity.

This camp is great for both beginners and experienced players. Each class will consist of a fun interactive teaching period and guided practice time. Both new and returning participants are welcome and will get to the next level under the guidance of an experienced Chess Scholars coach. There will also be a chess competition with prizes! Each camper will take home a chess set and an award. Please bring a snack each day.

Ages: 6 - 13 years

Code	Dates	Days	Time	R/NR Fee
31461-1	3/24-3/28	M-F	1:45-4:45pm	\$142/\$178

Laschen Center, Marimac Room
Chess Scholars

Mad Science Spring Break Camp

Our week long camp will combine activities and experiments with games, projects, and explorations in the area of Codes, Claw, and Constellations. The Science of Sports, Nature, Earth Awareness, Space and Mad Messages. Take home projects including a center of gravity balancing toy, a telescope, animal track casts, and lots more! In addition to all the take home projects, each participant will receive a Mad Science Camp t-shirt!

Ages: 7 - 12 years

Code	Dates	Days	Time	R/NR Fee
31462-1	3/24-3/28	M-F	9:30am-Noon	\$180/\$225

Sullivan Community Center, Meeting Room A
Mad Science of Northern Illinois

New!

Mad Science

Days off School Workshops

Although school is off for the day, you can still spend it with your friends experimenting with cool science fun. All classes take place at the Sullivan Community Center and are instructed by Mad Science of Northern Illinois.

Chemistry

In this class we'll examine a crystal that seems to disappear in water and make a sample to take home. We'll also learn about a complex chemical reaction, then break it down step by step to see which part does what. We'll look at still another chemical reaction as we make some sidewalk chalk to take home.

Grades 4 - 6

Code	Date	Day	Time	R/NR Fee
31463-2	2/18	M	10:00-Noon	\$26/\$33

Magical Illusions

Did you know that science is often used to perform magic tricks? You'll learn the "science secrets" of some fun tricks and take some home to surprise your friends and family. See how you can make water disappear, as you learn about magical chemistry and how it can be used to fool people. Keeping with the "on-stage" theme, we'll explore the topic of Lasers. Learn about light and color, and see how lasers differ from ordinary light. Students will help in creating a laser light show!

Grades 1 - 3

Code	Date	Day	Time	R/NR Fee
31463-3	2/22	F	10:00-Noon	\$26/\$33

Air and Aerodynamics

In this class we'll learn about the air around us and how changes in pressure can make amazing things happen. We'll discuss Bernoulli's Principle and see how it does everything from making a baseball curve to holding up an airplane. Speaking of airplanes, we'll learn how they fly and the forces affecting them, as we make a perfectly acrobatic stunt plane and some other interesting airplanes.

Grades 4 - 6

Code	Date	Day	Time	R/NR Fee
31463-4	3/3	M	10:00-Noon	\$26/\$33

Art and Color

See the beauty of light and color while learning about the white light spectrum and how colors can be mixed together and taken apart. We'll make a glow-in-the-dark Mad Science t-shirt, experiment with diffraction grating glasses, and see the beautiful effects of chromatography. We'll learn about some of the tools that artists use and the science behind some art techniques. What an "en-lightening" class!

Grades 1 - 3

Code	Date	Day	Time	R/NR Fee
31463-1	1/21	M	10:00-Noon	\$26/\$33

Adult Basketball Leagues

Ages 18 & up

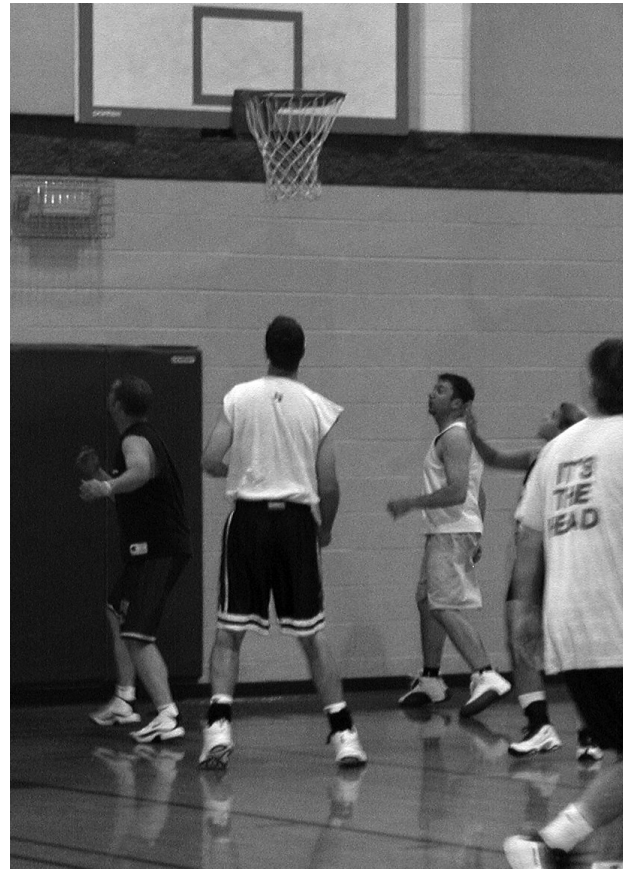
The Vernon Hills Park District offers three adult basketball leagues for varying skill levels. Each league is limited to eight teams playing a ten-game regular season.

Information packets are available at the Sullivan Center.

League play begins January 8, 2008 at the Sullivan Community Center and/or Hawthorn Middle School-South. The season will end with the top four teams competing in a post-season tournament in late March.

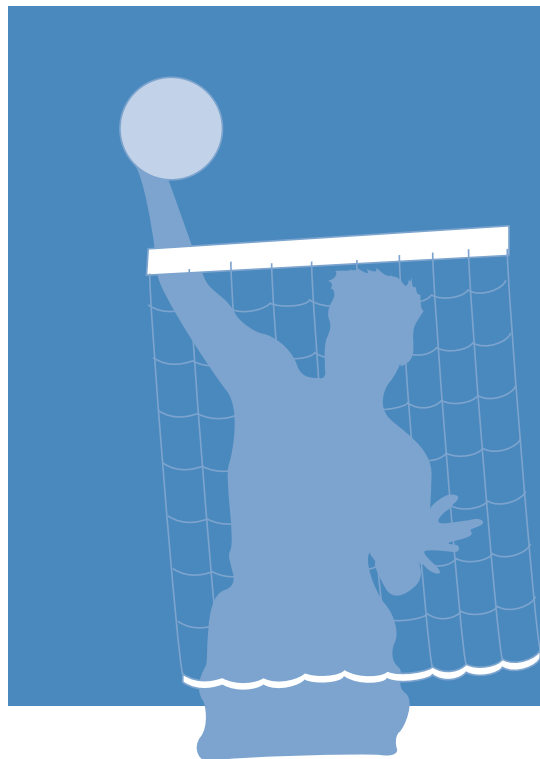
Game days: Tuesdays and/or Thursdays Time: TBD

Fees: \$600 team/\$675 non-resident team



Registration for this basketball league will be accepted as follows:

November 26-December 2	Teams with 60% residents
December 3-9	Returning non-resident teams
December 10	Open registration



Adult Co-Rec Volleyball

Join us for informal volleyball! Individuals will be grouped randomly to form team each week. A supervisor will be there to assist in organizing teams.

Residents of Hawthorn School District 73 pay resident rates!!!

Ages 18 & up

Code	Dates	Day	Time	R/NR Fee
32710-1	1/9-4/9	W	7:00-9:00pm	\$50/\$63

No class: 3/26

Hawthorn Middle School-South

POWER HOURS

These classes are designed for adults who are on the go. If you aren't able to find the time to commit to a multi-week class these short workshop style classes will be right up your alley.

Knit Quick

Learn to knit a scarf in minutes. This is a great "girlfriends" or mom and daughter learning activity. Within 2 hours, you'll learn to knit and then begin to create your own fashionable, fun scarf using the beautiful, textured yarns you'll find in any craft store. You'll learn to cast-on, knit, increase, decrease, bind-off and apply fringe.

Each class is the same, so please register for only one date. Each participant will need to bring 1 skein of smooth or textured yarn, 1 pair of knitting needles, (size 8 to 19), and 1 point protector is optional.

Ages: 10 years & up

Code	Date	Day	Time	R/NR Fee
30181-1	1/5	S	1:00-3:00pm	\$25/\$31
30181-2	2/2	S	1:00-3:00pm	\$25/\$31
30181-3	3/8	S	1:00-3:00pm	\$25/\$31
30181-4	4/5	S	1:00-3:00pm	\$25/\$31

Sullivan Community Center, Meeting Room B
Jeanne Wolff

Company Plan Distribution Options Seminar

In today's world, job and security is no longer a given. Many people may find themselves a victim of layoffs, job changes, down-sizing, and early retirement. In this seminar you'll learn more about the advantages and disadvantages of your financial options - be they monthly pensions, rollovers, or lump sum distributions.

Ages: Adults

Code	Date	Day	Time	R/NR Fee
30631-1	1/23	W	7:00-8:00pm	\$20/\$25
30631-2	3/20	Th	7:00-8:00pm	\$20/\$25

Laschen Center, Carriage Green Room
Thomas J. Riordan, Jr., AAMS Financial Advisor

Scrapbooking 101

Do you have hundreds of photos tucked away in a closet or shelf somewhere? Have you ever wondered how you could possibly get them all organized and into albums? Have you heard about scrapbooking but think it sounds overwhelming? Your instructor is an experienced scrapbooker who enjoys helping others get organized and create beautiful scrapbooks for years of enjoyment! This class is designed to give you quick tips on how to sort and organize your photos in one evening! You will also learn the basics of scrapbooking and how to complete quick and simple pages. Bring 2-8 pictures of a family trip or recent event as you will create a beautiful page that you can take home. Refreshments and supplies will be available.

Ages: Adults

Code	Date	Day	Time	Fee/NR
30113-1	1/15	T	7:30-9:00pm	\$18/\$22
30113-2	2/26	T	7:30-9:00pm	\$18/\$22

Laschen Center, Marimac Room
Rebecca Quackenbush, Creative Memories Consultant

Baby Album Workshop

Tired of giving the same old baby shower gifts? Are you expecting a baby and would like to capture your expecting moments before they are lost? Cherish the love and beauty of your children in a beautiful album filled with memories! You'll learn how to get organized and started with your baby album goals. You can learn to create a baby gift for a friend or begin the tradition of scrapbooking your children's memories for generations of enjoyment. Refreshments and supplies will be available.

Ages: Adults

Code	Date	Day	Time	R/NR Fee
30112-1	2/12	T	7:30-9:00pm	\$13/\$16

Laschen Center, Marimac Room
Rebecca Quackenbush, Creative Memories Consultant

Create a Digital Photo Album

Do you enjoy taking digital photos? Are they still sitting on your computer or in your camera? Reward yourself by creating a beautiful digital story book using a FREE StoryBook Creator software program. You'll be guided through the simple-to-use software. Just choose the look of your book, drag 'n drop your pictures onto the pages, add some text if you wish and presto - your book is complete! If you have a laptop, bring it along, but it's not required to attend. Fee includes supplies and Free Digital Photo Album Software.

Ages: Adults

Code	Date	Day	Time	R/NR Fee
30111-1	1/30	W	7:30-9:00pm	\$25/\$31

Laschen Center, Marimac Room
Rebecca Quackenbush, Creative Memories Consultant

Doing Your Homework – College Savings Seminar

Before you know it, your little ones will be ready for college. This means that now is the time to start planning for their education. In just one hour, you'll learn about educational savings plans and how to help make their college dreams true.

Ages: Adults

Code	Date	Day	Time	Fee/NR
30632-1	2/20	W	7:00-8:00pm	\$20/\$25
30632-2	4/17	Th	7:00-8:00pm	\$20/\$25

Laschen Center, Carriage Green Room
Thomas J. Riordan, Jr, AAMS Financial Advisor

A Manicure for Me!

This is a great chance for young women to get some practice working on their nails before Graduation, Prom, or summer while spending quality time with their mom, grandma, or aunt! You'll need to bring the following supplies from home - two kitchen towels, 2 empty Cool Whip tubs (or container of similar size), nail implements, nail polish remover, some of your favorite nail polish, hand/cuticle cream, and Q-Tips. We will have extras on hand if you don't have them or if you forget. Everyone will get to take home some supplies at the end of the program, and your nails will look fabulous!

Ages: 12 - 16 years with an adult

Code	Dates	Day	Time	R/NR Fee
30221-1	2/11-3/3	M	6:00-7:30pm	\$60/\$75 per couple
			Each additional person	\$25/\$31

Sullivan Community Center, Meeting Room A
Estee Glazer

Landscapes

This class welcomes pastel and oil students of all levels. Beginners will receive instruction in "How to get a likeness." Instruction is in the Flemish Masters techniques in oils for both landscape and portraits. Students must provide their own materials. A list of recommended materials will be available at the Sullivan Center Front Desk. There is no prerequisite for this class.

Ages: 16 years & up

Code	Date	Day	Time	Fee
30132-1	1/9-2/27	W	10:30-1:30 pm	\$150

Sullivan Center, Meeting Room B
Lynn Nemrava

Beginning Piano for Adults

Upon completion of this course students will have learned how to play some of the most popular music ever written, including repertoire from the classics, pop, jazz, and Broadway. A thorough understanding of the basic concepts of music is achieved as well as an "I-can-do-it" attitude. The purchase of course materials is recommended prior to the start of the class. If you have already completed the Beginners course, call Karnes Music to inquire about the next level of classes. Arrangements for make-up classes due to a class falling on a holiday can be made at Karnes Music.

Ages 13 & up

Code	Dates	Day	Time	Fee*
30611-1	2/4-3/31	M	3:00-3:45 pm	\$80
30611-2	2/5-4/1	T	2:00-2:45 pm	\$80
30611-3	2/5-4/1	T	3:00-3:45 pm	\$80
30611-4	2/6-4/2	W	3:00-3:45 pm	\$80
30611-5	2/7-4/3	Th	6:00-6:45 pm	\$80
30611-6	2/8-4/4	F	3:00-3:45 pm	\$80
30611-7	2/8	F	4:00-4:45 pm	\$80

Karnes Music, 700 N. Milwaukee Ave. Vernon Hills

*plus materials

For more information on materials fees, please call Karnes Music at (847) 367-1681

Ice Skating & Sledding



Ice Skating

Skating on Park District property is allowed only when a GREEN flag is flying at the rink or pond. If there is no flag, skating is not permitted.

Before you head out to skate:

- Check the Park District's website at www.vhparkdistrict.org or call the weather hotline at 847-996-6616 for current conditions.
- Skate only when ice is six inches or thicker; ice that is thinner than six inches is considered by the District to be unsafe.
- Never skate on a lake or pond by yourself.
- Keep emergency equipment nearby and available.
- Report unsafe or dangerous conditions to the Park District.
- Do not skate at night.
- Be courteous to other skaters; play hockey only in designated areas.

During the winter, the Parks Department tests the depth of ice each weekday. Testing is not done on weekends, holidays or during times of storm clean up. Snow removal from paths and parking lots is the District's first priority during storm clean up.

Ice Skating Locations

Evergreen Lake at Deerpath Park, adjacent to the softball field
Willow Lake at Deerpath Park, north of the Cherokee Road entrance
Grosse Pointe pond, at Grosse Pointe Boulevard and Hunter Court
Century Park basketball courts are filled and frozen:

- Across from Hawthorn Middle School North, off of Hawthorn Parkway
- At Indianwood Drive, off of Lakeview Parkway

Sledding

The Vernon Hills Park District's unsupervised sled hill is located at the north end of Century Park on Indianwood Drive. Sledding is permitted when snow is considered deep enough. Check the posted sign at the hill to see if sledding is permitted on any given day.

Open Registration begins:
December 13 at 8:30am

4 easy ways to register!

1. Mail-in

Sullivan Community Center, 635 N. Aspen Drive,
Vernon Hills, IL 60061

2. Drop-off at the Sullivan Community Center

3. Fax to 847-996-6801, 24 hours/day.

4. Online at www.vhparkdistrict.org

Payment for faxed registrations: VISA, Mastercard, Discover or Debit Cards accepted. The Park District is not responsible for incomplete transmissions. Please call 847-996-6800 to verify receipt.

Lottery Deadline: December 4 at 9pm in person
Online Lottery Deadline: December 4 at midnight

How lottery is processed:

All resident registrations received by 9:00 pm on December 4 (or midnight online) are entered into a computerized lottery. Registration payments will be deposited prior to the lottery being spun. The lottery program randomly selects registrants up to the maximum number of participants allotted for each program. If your preferred choice is full, then the computer will automatically check your alternate choice for availability. If that is also full, you will be placed on the wait list for your preferred choice.

Benefits of lottery registration: Whether signing up on the day you receive your brochure or on December 4 at 9:00 pm (or midnight online), your chances are exactly the same. This assures equal opportunity for ALL residents who meet the lottery deadline.

Confirmation: Enrollment status will be confirmed by mail. Phone calls regarding registration confirmation will be accepted after December 13.

Open Registration: Due to lottery processing, you will not be able to register online from midnight, December 4, until 8:30am on December 13. At 8:30am on December 13, you will be able to register one of two ways: online or walk-in. For walk-in registration, line numbers will be handed out as soon as doors open at 5:30am on December 13. There is a limit of one number per person and you must be present when your number is called. For online registration, simply log onto your computer with your username and password. Registration will begin at 8:30am and both walk-in and online methods will be processed simultaneously.

Resident registrations received between December 4 and December 13 will be processed in the order in which they were received, but after open registrants are processed on the morning of December 13.

Open Registration Limits: On the first day of open registration, you may only register individuals living in your household.

Class Cancellations

The Park District makes every effort to avoid canceling classes. However, in order to operate efficiently, each class must have a minimum number of registered participants at least 5 days before class start date or the class will be cancelled. If a program is cancelled, participants will be notified prior to the start of the program and a full refund will be issued.

Refunds

1. A full refund, minus a \$5 service charge, will be granted if the refund request is received at least 10 business days before the start of the program. To avoid the \$5 service charge, you may apply the refund toward another Park District program or accept a credit for future use.
2. Refund requests received less than 10 days before the start of a program or after a program has begun will be granted and pro-rated upon administrative approval. The \$5 service charge also applies.
3. No refunds will be issued once 50% of the program session has been completed.
4. Season passes are not refundable.
5. Refunds will be mailed to participants approximately 2-3 weeks after administrative approval is received.
6. Preschool and day camp have separate refund policies. Please refer to the appropriate section for details.

Refund request forms are available from the front desk at the Sullivan Community Center and must be returned to the same location.

Eight Easy Registration Tips

1. When registering, make sure you completely fill out the registration form.
2. You may list up to two participants on each form.
3. If you need more room, simply copy the form or stop by the Sullivan Center and pick up extra forms.
4. Alternate choices are only used if your preferred choice is full.
5. Please make check or money order payable to the Vernon Hills Park District or fully complete the credit card information. Pay only the amount of your preferred choice program(s).
6. Confirmation letters will be mailed after your registration has been processed.
7. **WAIVERS MUST BE SIGNED.** The waivers are located on the reverse side of the registration form with the signature area on the front of the registration form. Parents must sign the waiver for those 18 years of age and younger.
8. Simply mail, drop off or fax your form with the appropriate fees to the Sullivan Community Center.

Please Note: You must have proof of residency on file (see page 40).

Registration residency requirements

Proof of Residency Requirements

In order to improve service to our residents and ensure that all program participants are charged equitably, the Vernon Hills Park District has revised its proof of residency process. Hawthorn School District 73 residents that live outside of Vernon Hills Park District boundaries are eligible for resident rates. However, they are not eligible to be a part of the lottery process and may begin registering during open registration which begins December 13.

Vernon Hills and District 73 residents will receive resident rates by providing the following proof of residency on an annual basis:

- State Photo ID or Drivers License, and
- Real Estate Tax Bill or current utility bill (no older than 60 days), or proof of recent real estate contract closing.

You must submit proof of residency in person only at:

Vernon Hills Park District • Sullivan Community Center
635 N. Aspen Drive, Vernon Hills, IL 60061

Hours of Operation:

Monday - Friday 5:30am-9:00pm
Saturday 7:00am-5:00pm
Sunday 9:00am-5:00pm

Questions about our proof of residency policy or online registration? Call 847-996-6800 or email us at: reginfo@vhparkdistrict.org

Will I know right away if I am enrolled in a class?

It depends on when you register. If you register before the lottery deadline, you will receive an immediate confirmation that you have been entered into the lottery. Once the lottery is spun, you will receive a second email confirming your enrollment status (enrolled, wait list).

Due to lottery processing, you will not be able to register online from midnight December 4 until 8:30 am December 13. At 8:30 am on December 13, Open Registration begins and Online Registration may once again be accessed. All registrations will be processed on a first-come, first-served basis. If you registered online, you will receive an email confirmation of enrollment status upon completion of the payment process.

What else can I do online besides register for programs?

You will be able to browse all the programs we offer and view up-to-date class enrollment numbers. If you are registered for a program that offers a multiple payment schedule, you will be able to pay your balance online. You will also have the ability to review all the programs for which you (and your family) have registered and reprint receipts.

Who can register online?

Any individual or household may register for Park District programs online by submitting the ONLINE ACTIVATION FORM. However, in order to receive resident rates, you must have established proof of residency.

How long will it take to activate my household user ID?

After you drop off your form and proof of residency, your household user ID and temporary password will be immediately assigned. The first time you log on, you will be prompted to change your password.

Which programs are eligible for online registration?

You may register for any of our programs that have a code number. Fitness passes and Family Aquatic Center passes cannot be purchased online at this time.

Online payments are processed through a secure system. We accept Visa, Mastercard, Discover and Park District Fun Cards online. You may purchase Park District Fun Cards at our Sullivan Community Center in any denomination, and re-load them as needed!

Online Activation Form

Family Last Name _____ Elem. School District _____

Address _____ City _____ Zip _____

Phone(home) _____ (work) _____

E-mail _____

All family members at this address: _____ Date of Birth _____ Circle One _____ Grade _____

Name: _____ Male Female _____

Name: _____ Male Female _____

Name: _____ Male Female _____

Name: _____ Male Female _____

Name: _____ Male Female _____

Return this form to: Vernon Hills Park District, 635 N. Aspen Drive, Vernon Hills, IL 60061

Registration Form **Winter 2008**

Return this form to: Vernon Hills Park District, 635 N. Aspen Drive, Vernon Hills, IL 60061

Family Last Name _____ Home Phone (_____) _____

I agree to the waiver on the back of this form. Signature _____ Date _____

Address _____ Have you moved in the past year? _____

City _____ Zip _____ School Dist. _____

Emergency Name _____ Emergency Phone (_____) _____

E-mail (optional) _____ Would you like confirmation emailed to you? _____

Participant _____ Age _____ Birthdate _____ Sex _____ Grade _____

PREFERRED (1 st choice)			**ALTERNATE (2 nd choice)			
Program	Code	Fee	Program	Code	Fee	OFFICE USE

**Alternate choice will be used if your preferred choice is full. All preferred choices MUST be on a separate line.

Participant _____ Age _____ Birthdate _____ Sex _____ Grade _____

PREFERRED (1 st choice)			**ALTERNATE (2 nd choice)			
Program	Code	Fee	Program	Code	Fee	OFFICE USE

**Alternate choice will be used if your preferred choice is full. All preferred choices MUST be on a separate line.

OFFICE USE ONLY

Received By: _____

Date: _____

TOTAL FEES _____ Make checks payable to: VERNON HILLS PARK DISTRICT

NOTE: Payments will be deposited upon receipt.

Charge To: Visa Mastercard Discover Debit Card

Account Number _____ **
**SECURITY CODE REQUIRED-last three digits located on signature line on back of card

Cardholder Name _____ Expiration Date _____ Charge Amount _____

Authorized Signature _____ Date: _____

All refund requests must be made in writing ten working days before the start of the program. A \$5 service charge per registrant, per program will apply.

Check if you need any special accommodations, in accordance with The Americans with Disabilities Act, to effectively participate in the above activities.

Name of Participant _____ Registration begins upon receipt of brochure.

VERNON HILLS PARK DISTRICT PROGRAM WAIVER, RELEASE, AND CONSENT TO BE PHOTOGRAPHED

Please read this form carefully and be aware that, by registering for, and for participating in, Vernon Hills Park District ("District") programs, you are releasing all claims for injuries arising out of these programs that you or your minor child or ward who is a named participant might sustain. In registering for these programs, you are agreeing as follows:

As a participant (or the parent or guardian of a minor participant) in these programs, I recognize and acknowledge that there are certain risks of physical injury, and I agree to assume the full risk of any damages or loss which I (or my minor child or ward) may sustain as a result of participating, in any manner, in any and all activities connected with or associated with such programs. I further recognize and acknowledge that all athletic activities involving strenuous exertion or potential body contact are hazardous recreational activities and involve substantial risk of injury.

I agree to release, waive and relinquish any and all claims I (or my minor child or ward) may have as a result of participating in these programs against the District, any and all other participating or cooperating governmental units, any and all independent contractors, officers, agents, servants and employees of the governmental bodies and independent contractors, and any and all other persons and entities of whatever nature, that might be directly or indirectly liable for any injuries that I (or my minor child or ward) might sustain as a result of participating in these programs, the District's provision of, or failure to provide, proper instructions or supervision, the use and adjustment of any and all machinery, equipment, and apparatus, and anything related to my use (or the use by my minor child or ward) of the services, facilities, or premises involved in these programs, and transportation to and from any events.

I understand the nature of the programs for which I am registering, either individually or on behalf of my minor child or ward, and have read and fully understand this Waiver and Release of All Claims. I further understand that any advisements or warnings of the particular risks of these programs that I or my minor child or ward subsequently receive will be incorporated by reference into and become a part of this Agreement.

I acknowledge that District staff may photograph participants in District programs, classes or events and that the District may publish any of these photographs in its catalogues, brochures, pamphlets or flyers. I hereby consent to the District taking and publishing photographs of me or my minor child or ward.

Preschool '08-'09 Registration Form

Return this form to: Vernon Hills Park District, 635 N. Aspen Drive, Vernon Hills, IL 60061

Family Last Name _____ Home Phone (_____) _____

I agree to the waiver on the back of this form. Signature _____ Date _____

Address _____ Have you moved in the past year? _____

City _____ Zip _____ School Dist. _____

E-mail (optional) _____

Emergency Name _____ Emergency Phone (_____) _____

Check if you need any special accommodations, in accordance with The Americans with Disabilities Act, to effectively participate in the above activities.

Name of Participant _____ Primary Disability _____

CHILD INFORMATION

First Name: _____

Birthdate: _____ Age: _____ Sex: _____

PRESCHOOL CLASSES 2's • Young 3's • 3's • 4's • Pre-K • Enrichment classes

Class: _____ Code: _____ Fee: \$100.00 deposit

Please indicate your alternative choice here Code: _____ Fee: \$100.00 deposit

SUPPLEMENTAL PRESCHOOL CLASSES Preschool Plus • Investigation Station • Lunch Bunch • Preschool Spanish

Class: _____ Code: _____ Fee: _____ (full amount due)

Please indicate your alternative choice here Class: _____ Code: _____

Class: _____ Code: _____ Fee: _____ (full amount due)

Please indicate your alternative choice here Class: _____ Code: _____

Received By: _____

Date: _____

OFFICE USE ONLY

Make checks payable to: **VERNON HILLS PARK DISTRICT**

Charge To: Visa Mastercard Discover Debit Card

Account Number _____ **

Cardholder Name _____ Expiration Date _____ Charge Amount _____

Authorized Signature _____ Date: _____

All refund requests must be made in writing ten working days before the start of the program. A \$5 service charge per registrant, per program will apply.

Registration begins upon receipt of brochure.

Registration waiver

VERNON HILLS PARK DISTRICT PROGRAM MANDATORY WAIVER & RELEASE OF ALL CLAIMS

Please read this form carefully and be aware that in signing up for and participating in Vernon Hills Park District programs, you will be releasing all claims for injuries arising out of these programs, that you or the other named participants might sustain. The terms “I”, “me”, and “my” also refer to parents or guardians as well as participants in the programs. In registering for these programs, you are agreeing as follows:

As a participant in these programs, I recognize and acknowledge that there are certain risks of physical injury, and I agree to assume the full risk of any damages or loss which I may sustain as a result of participating, in any manner, in any and all activities connected with or associated with such programs. I further recognize and acknowledge that all athletic activities involving strenuous exertion or potential body contact are hazardous recreational activities and involve substantial risks of injury.

I agree to waive and relinquish any and all claims I may have as a result of participating in these programs against the Vernon Hills Park District, any and all other participating or cooperating governmental units, any and all independent contractors, officers, agents, servants and employees of the governmental bodies and independent contractors, and any all other persons and entities of whatever nature, that might be directly or indirectly liable for any injuries that I might sustain as a result of participating in these programs. (The parties described in the preceding sentence are referred to as “release parties” in the remainder of the Agreement.

I do hereby fully release and discharge the Vernon Hills Park District and the other release parties from any and all claims for injuries, damage or loss which I may have or which may accrue to me on account of my participation in these programs.

I further agree to indemnify, hold harmless and defend the Vernon Hills Park District and any and all other release parties, from any and all claims resulting from injuries, damages and losses sustained by anyone, and arising out of, connected with, or in any way associated with my conduct and the activities of these programs.

I further understand and agree that the terms such as “participation”, “programs”, and “activities” referred to in this Agreement, include all exercises and physical movements of any nature while I am participating in these programs, further include the provision of or failure to provide proper instructions or supervision, the use and adjustment of any and all machinery, equipment, and apparatus, and anything related to my use of the services, facilities, or premises involved in these programs, and transportation to and from any events.

I understand the nature of the programs for which I am registering, and have read and fully understand this Waiver, Release and Hold Harmless Agreement. I further understand that any advisements or warnings of the particular risks of these programs that I subsequently receive will be incorporated by reference into and become a part of this Agreement.

On occasion, the District may photograph or videotape participants in its programs, classes or events, or of people in the District’s parks. I understand and agree that these pictures may be used for Park District promotion via brochures, pamphlets, flyers, website or Park Place cable show, as well as for media promotion.

FUN Cards make wonderful gifts for birthdays, holidays, special occasions and teacher appreciation! FUN Cards can be used to pay for all Park District programs and activities, teen dances, Fitness Center, preschool, day camp and Aquatic Center lessons, passes and concession stand. FUN Cards are available in any amount and may be purchased at the Sullivan Front Desk with cash, check, credit or debit cards. Fun cards may be used for online registration.

Facility Rentals

Sullivan Community Center, 635 N. Aspen Drive

Available for rental: Sunday-Thursday until 10:00pm Friday and Saturday, until 1:00am

For more information: Jason Bullman, 847-996-6807

Room	Fee/hour		Room Size	Seating Capacity	
	R	NR		Dinner*	Theater
Community Room, incl stage and kitchen					
-four hour minimum rental	\$550	\$688	2816 sq. ft. (44 x 64)	200	300
Each additional hour	+\$125	\$156			
Expanded Community Room, includes stage, kitchen and meeting rooms A&B					
-four hour minimum rental	\$625	\$781	3828 sq. ft. (44 x 87)	260	400
Each additional hour	+\$150	\$188	*Dinner capacity based on table rounds with chairs.		
Room	Fee/hour		Room Size	Seating Capacity	
	R	NR		Dinner	Theater
Meeting Room A or B	\$35	\$44	506 sq. ft. (22 x 23)	30	50
Meeting Room A or B, with kitchen	\$70	\$88	506 sq. ft. (22 x 23)	30	50
Combined Rooms A&B	\$60	\$75	1012 sq. ft. (44 x 23)	60	100
Combined Rooms A&B, with kitchen	\$95	\$119	1012 sq. ft. (44 x 23)	60	100
Gymnasium	\$80	\$100	-Available Sat/Sun evenings after 5:00pm		

NR=Non-Resident Rates

Laschen Community Center, 294 N. Evergreen Drive

Available for rental: Daily 8:00 am-10:00 pm (No alcohol permitted at this facility)

For more information: Debi Miller, 847-996-6931.

Room	Fee/hour		Room Size	Seating Capacity	
	R	NR		Dinner*	Theater
Aspen Conference Room	\$25	\$31	357 sq. ft. (21 x 17)	10	NA
Grosse Pointe Conference Room	\$25	\$31	360 sq. ft. (20 x 18)	10	10-15
Marimac Room	\$40	\$50	744 sq. ft. (L-shape)	60	80
Carriage Green Room	\$40	\$50	832 sq. ft. (32 x 26)	70	80
Sugar Creek Room	\$40	\$50	868 sq. ft. (L-shape)	75	80
Century Room	\$40	\$50	868 sq. ft. (31 x 28)	75	100
Hawthorn Melody Room	\$50	\$63	1170 sq. ft. (39 x 30)	100	140
Deerpath Room with kitchen	\$60	\$75	1209 sq. ft. (39 x 31)	100	130

*Dinner capacity based on rectangular tables with chairs.

NR=Non-Resident Rates

Reservation process

Stop by either Community Center to check availability or call 847-996-6800. Rental fee, damage deposit and proof of residency are required at the time of the reservation. Reservations made less than four weeks before the requested date are accepted only at the discretion of the Facilities Supervisor.

Damage Deposit

Any room at the Laschen Community Center	\$200	Sullivan Center Meeting rooms or gymnasium	\$200
Sullivan Center Community Room	\$600	Sullivan Center Community Room/Meeting Room Combo	\$800

Important Information for Sullivan Center Rentals

In order to continue providing our residents and neighbors with a safe and high quality facility, all parties of 100 or more must contract with a Park District-approved catering company to provide and serve both food and/or alcohol throughout the duration of the rental. Parties of less than 100, not serving alcohol, may provide their own catering. The Park District reserves the right to require smaller parties to comply with the food and beverage catering policy. Should this be the case, the renter will be notified before the rental is confirmed.

A list of Park District-approved caterers for food, beverages and alcohol is available at the Sullivan Center. The renter is responsible for making all catering arrangements and must provide proof of contract to the Park District 60 days prior to date of the event.

Supporting Your Park District



Volunteering

The Park District offers several opportunities for residents to support their Park District or to otherwise get involved in community events. Volunteers are always welcome and needed for many of our youth athletics programs (see page 21). To volunteer for any one of our special events, contact Kelly Stoeber at 847-996-6805.

Tree donations

In addition, residents and neighbors can honor a special someone, commemorate a birthday or anniversary, or celebrate an engagement or wedding by donating a tree for one of our parks! Trees are sold at cost, with prices ranging from \$225-\$475 depending on the type of species selected. Tree donations are accepted year-round, but are only planted in the spring or fall. Trees can be personalized with a bronze plaque, which is also sold at cost.

Tree varieties & cost:

Ash, Linden, Honeylocust, Maple, Oak & Elm	2.5" to 3.5" diameter	\$350 - \$475
Evergreens-Spruce or Pine	5-6 foot tall	\$225 - \$300

Bench donations

For those who like to walk in the parks, a bench donation might seem especially appropriate. The District has recently selected a park bench that is available in a variety of colors that will complement any of its parks. Benches may be purchased for donation at a cost of \$700, and personalized with a bronze plaque similar to the tree donation plaques. Prices for plaques start at \$70 & up.



Wall of Fame

For a \$50 donation, you can recognize someone special by adding a plate/leaf to our Wall of Fame, prominently located at the Sullivan Community Center.

For order forms or additional information about our donation programs, check out our website at www.vhparkdistrict.org or contact Cheryl Baron at 847-996-6933.



The Tree & Bench Donation order form can be found online at www.vhparkdistrict.org or at the Park District Community Centers.

General Information

Age Qualification

The Vernon Hills Park District establishes appropriate age qualifications for each of its programs. Only the program supervisor is authorized to make exceptions to these age ranges. Consideration will only be given once all age-appropriate participants have had an opportunity to register.

Park District FUN Card

FUN Cards make wonderful gifts for birthdays, holidays, special occasions and teacher appreciation! FUN Cards can be used to pay for all Park District programs and activities, teen dances, Fitness Center, preschool, day camp and Aquatic Center lessons, passes and concession stand. FUN Cards are available in any amount and may be purchased at the Sullivan Front Desk with cash, check, credit or debit cards.

Voter Registration and Notary Public services

You can register to vote or change your registration information at either of our Community Centers during regular business hours. Notary public services are also available. Please remember that documents must be signed in the presence of the Notary Public.

Resident/Non-Resident (NR) Fees

Vernon Hills residents significantly contribute to the operating budget of the Park District by paying property taxes. Everyone who resides within the geographical boundaries of the Vernon Hills Park District (VHPD) are eligible to receive resident discounted rates. Once per year, each Vernon Hills household is required to show proof of residency in order to qualify for residency rates. See page 38 for details.

Families living within Hawthorn School District #73 are also eligible to receive resident discounted rates for programs.

Non-resident fees are the second fees shown in program descriptions. These rates are not discounted and are necessary in order to ensure that non-resident participants contribute to the overall financing of the park system on an equitable basis with residents.

Senior Citizen Discount

Senior discounts are available for individual passes and membership to our Fitness Center and Family Aquatic Center for residents aged 62 & older. Other programs may also offer a senior discount or rate, please refer to individual program details for more information.

NSF Policy

A \$25 service charge will be assessed on all checks returned due to non-sufficient funds (NSF).

Photo & Video Policy

On occasion, the District staff or contractors may take pictures or video footage of participants in our programs, classes or events, or of people in the District's parks. These pictures may be used for the Park District's website, brochures, pamphlets, videos, flyers or for media promotion. Residents are encouraged to submit photos and/or video footage for the Park District to use in its informational materials.

Vandalism

Each year, vandalism costs the Park District thousands of dollars. Higher costs of maintenance, repair and clean up of park areas can be avoided only with YOUR help. Should you see vandalism occurring, please call the Vernon Hills Police at (847) 362-4434.

Park District Police

Through a cooperative agreement with the Village of Vernon Hills, all parks and park facilities are policed by the Vernon Hills Police Department. Police are radio dispatched and may be summoned by calling (847) 362-4434.

Speakers Bureau

The Park District staff would like to encourage your club or group to invite one of our staff to your next meeting. Let us keep you informed about Park District happenings. Contact Cheryl Baron, Communications Manager at (847) 996-6933.

Americans With Disabilities

The Vernon Hills Park District will comply with the Americans With Disabilities Act (ADA), which prohibits discrimination in the provision of programs, services or activities to individuals with disabilities. We invite any participant with a special need to contact our staff or our SRA staff, upon registration, so that a smooth inclusion can occur. If you have any questions regarding the Park District's ADA policy, or believe you have been unfairly discriminated against in the provision of programs, services or activities of the Vernon Hills Park District, please contact Larry DeGraaf, Executive Director, at (847) 996-6800.

For the deaf or hearing-impaired, please call the Illinois Relay Center voice only operator at 800-526-0857.

Affiliations

CAP - Community Alliance Project, a coalition of business and community leaders formed to network and coordinate positive youth development efforts in the Vernon Hills community.

DAVAC - Drug Alcohol Violence Awareness Committee, an advisory organization whose focus is substance abuse and violence prevention and education on behalf of Hawthorn Schools.

IGFOA - Illinois Government Finance Officers Association

IPRA - Illinois Park and Recreation Association

IAPD - Illinois Association of Park Districts

NAYS - National Alliance for Youth Sports

NPRA - National Recreation and Park Association

PAYS - Parents Association for Youth Sports

SRCLC - Special Recreation Association of Central Lake County

VHCYAA - Vernon Hills Cougars Youth Athletic Association

Your Parks amenities chart

	Total Acreage	Barbecue Grills	Baseball/Softball Fields	Basketball Courts	Biking/jogging/Walking Path* (mi.)	Boat Launch	Cross Country Skiing	Exercise Trail/Area	Family Aquatic Center	Fishing	Fitness Center	Gymnasium	Ice Skating	In-Line Skate Park	Lake/Pond	Open Field/Passive Play Area	Parking Lot	Picnic Shelter/Gazebo	Playground	Programs	Restroom Sites	Room Rentals	Sledding	Soccer Fields	Tennis Courts	Volleyball Courts
Aspen Backyard Park Aspen Dr. & Sullivan Dr.	.7															●		1	1							
Augusta Park Deerpath & Augusta Dr.	2.3															●		1	1**							
Beaver Creek Park Beaver Creek Dr. & Greggs Pkwy.	.97															●										
Carriage Green Park Gross Pointe Circle & Route 45	8				.28											●		1	1							
Central Park Ranney Dr. & Central Park Pl.	1.5															●		1	1							
Century Park Lakeview Pkwy. & Church or RR tracks	130	4	4	2	2.1*	●	●	●		●			1		2	●	3	4	2**		2		●	1	4	1
Deerpath Center Deerpath & Greenvale	NA																	1		●						
Deerpath Park Deerpath & Cherokee Rd. or Warington	69	1	4	1	1.5*		●			●			2		3	●	2	2	3**		2			2	6	1
Donnelley Park Donnelley Rd. & Marseilles St.	1.6															●		1	1							
Grosse Pointe Park Grosse Pointe Blvd. & Route 45.	38		3	1	1.5			●		●				1		●	2	1	2**		1				2	
Hartmann Park/Pavilion Oakwood Rd. & Cherry Valley Rd.	9.9	4	3		.25								●			●	2	2	1**	●	1				2	
Hawthorn Club Park Evergreen Dr. & Sheffield Dr.	10		1	1	.4											●		1	1**							
Hawthorn Melody Park Hazeltine Dr. & N. Huntington	16	2	2	1	.5*		●									●	1	1	1**		1			2	1	
Kiddie Korral Park Cherry Valley Rd. & Greenbriar Ln.	.4															●			1							
Lake Charles Park Greggs Pkwy. & Beaver Creek Dr.	69	1		.5	.5	●				●				1		●	1	3	1							
Laschen Community Center Evergreen Dr. & Tally Ho Dr.	NA																	1		●	3	●				
Marimac Park Deerpath Dr. & Route 45	5.5		1				●									●			1**							
Ranney Park Ranney Dr. & Depot St.	1.6															●			1							
Royal Oak Park Route 83 & Northfield Dr.	1.3															●										
Stone Fence Farm Park Stone Fence Rd. & Barn Swallow Ln.	3.7		1													●			1**							
Sugar Creek Park Buffalo Grove Rd. & Creek View Dr.	13						●									●		1	1							
Sullivan Community Center Aspen Dr. & Hawthorn M School N	12						●		●		●	●	●			●	1		1	●	2	4				
Sullivan Woods Sugar Creek & Hawthorn Club Parks	28						●									●										
Torrey Pines Park Torrey Pines Way & Gregg's Pkwy.	4.78															●			1							
Vernon Hills Athletic Complex Rt. 60 & Fairway Dr.	37.5		6											1				2			1			6		
Westwood Park Sullivan Dr. & Plumwood Ln.	.5																		1							

● Indicates available *Indicates lighted path **ADA inclusion swing